

# **Portofino Shores**

## **Landscape Modification**

### **Guidelines**

- ❖ Any alterations to the exterior of your property including ALL landscape changes must be submitted for approval by the ACB committee PRIOR to work beginning. This includes the replacement of dead landscaping as well.
- ❖ Removal/replacement of any trees requires a county permit. This permit can be found on the county website at:  
[http://www.stlucieco.gov/pdfs/NOTICE\\_OF\\_VEGETATION\\_REMOVAL\\_APPLICATION\\_4-25-12.pdf](http://www.stlucieco.gov/pdfs/NOTICE_OF_VEGETATION_REMOVAL_APPLICATION_4-25-12.pdf)
- ❖ Approval by the ACB committee to remove/replace a tree does not necessarily mean that they county will approve such removal/replacement. Approval from both must be granted before any trees are modified.
- ❖ Trees and other landscape plantings must meet the criteria set forth in the attached Code Minimum Plant Specifications.
- ❖ Please see the Architectural Modification Application Form and the Architectural Guidelines for additional information regarding landscape modifications.

# Portofino Shores

## Approved Plantings

### - STREET TREES

Live Oak  
Laurel Oak

*Quercus virginiana*  
*Quercus laurifolia*

### - CANOPY TREES

Live Oak  
Laurel Oak  
Mahogany  
Green Buttonwood  
Red Maple  
Bald Cypress  
Southern Magnolia  
Slash Pine

*Quercus virginiana*  
*Quercus laurifolia*  
*Swietenia mahagoni*  
*Conocarpus erectus*  
*Acer rubrum*  
*Taxodium distichum*  
*Magnolia grandiflora*  
*Pinus ellottii*

### - ACCENT TREES

Tree Form Ligustrum  
Tree Form Wax Myrtle  
Dahoon Holly  
Slash Pine  
Hibiscus Tree  
Crape Myrtle  
Nagi Podocarpus  
Wax Myrtle

*Ligustrum japonicum*  
*Myrica cerifera*  
*Ilex cassine*  
*Pinus ellottii*  
*Hibiscus rosa-sinensis*  
*Lagerstroemia indica*  
*Podocarpus nagi*  
*Myrica cerifera*

### - LARGE PALMS

Sabal Palm  
Royal Palm  
Washington Palm  
Alexander Palm

*Sabal palmetto*  
*Roystonea regia*  
*Washingtonia robusta*  
*Archontophoenix alexandrae*

## - SCREENING SHRUBS

Wax Myrtle  
Oleander  
Orange Jasmine  
Sandankwa Viburnum  
Split Leaf Philodendron

Myrica cerifera  
Nerium oleander  
Murraya paniculata  
Viburnum suspensum  
Philodendron selloum

## - GROUND COVERS

Yaupon Holly  
Shore Juniper  
Parsons Juniper  
Liriope  
Wax Jasmine  
Artillery Fern  
Boston Fern  
Spider Lily  
Mexican Heather  
Joseph's Coat  
Blue Daze  
African Iris

Ilex vomitoria 'Shellings Dwarf'  
Juniperus conferta (regular or dwarf)  
Juniperus chinensis 'Parsonii'  
Liriope muscari  
Jasminum volubile  
Peilea microphylla  
Nephrolepis exaltata  
Hymenocallis latifolia  
Cuphea hyssopifolia  
Alternanthera ficoidea  
Evolvulus glomeratus  
Diets vegeta

## - NON-FLOWERING SHRUBS

Pittosporum  
Sandankwa Viburnum  
Cocoplum  
Arboricola  
Green Buttonwood  
Silver Buttonwood  
Myrsine  
Sweet Viburnum  
Wax Privet  
Philodendron  
Fakahatchee Grass

Pittosporum tobira  
Viburnum suspensum  
Chrysobalanus icaco  
Schefflera arboricola  
Conocarpus erectus  
Conocarpus erectus 'sericeus'  
Myrsine guianensis  
Viburnum odoratissimum  
Ligustrum japonicum 'Recurvifolia'  
Philodendron selloum  
Tripsacum dactyloides



## - VINES

Bougainvillea  
Confederate Jasmine  
English Ivy

Bougainvillea 'Barbara Karst'  
Trachelospermum jasminoides  
Hedera helix

## - ACCENT SHRUBS/ PLANTS

Croton  
King Sago  
Crinum Lily  
Cardboard Plant  
Fakahatchee Grass  
Bird of Paradise  
Coontie  
Ti Plant  
Peregrina  
Copper Leaf  
Pygmy Date Palm  
Dwarf Fakahatchee Grass  
Ponytail Palm  
White Bird of Paradise  
White Bird of Paradise

Codiae im variegatum  
Cycas revoluta  
Crinum spp.  
Zamia furfuracea  
Tripsacum dactyloides  
Strelitzia reginae  
Zamia floridana  
Cordyline terminalis  
Jatropha integerrima  
Acalypha wilkesiana  
Phoenix roebelenii  
Tripsacum floridana  
Beaucarnea recurvata  
Strelitzia nicolai  
Strelitzia nicolai

## - FLOWERING SHRUBS

Oleander  
Bush Allamanda  
Downy Jasmine  
Indian Hawthorne  
Orange Jasmine  
Hibiscus  
Jasmine  
Plumbago  
Glorybush  
Shining Jasmine  
Florida Gardenia  
Natal Plum  
Azalea

Nerium oleander  
Allamanda nerifolia  
Jasminum multiflorum  
Raphiolepis indica  
Murraya paniculata  
Hibiscus rosa-sinensis  
Jasminum pubescens  
Plumbago auriculata  
Tibouchina urvilleana  
Jasminum nitidum  
Gardenia jasminoides 'Tabernaemontana'  
Carissa macrocarpa  
Rhododendron x 'George Taber'

# CODE MINIMUM PLANT SPECIFICATIONS

---

## TREES

- MINIMUM OVERALL HT. 12'
- MINIMUM SPREAD 5'
- MINIMUM CLEAR TRUNK 5'
- TREES SHALL MEASURE A MIN. OF 2.5 INCHES IN DIAMETER AT 4.5 FEET ABOVE GRADE AT TIME OF PLANTING

## HEDGES

- MINIMUM OVERALL HT. 24"
- TO FORM A 30" HT. MIN. CONT. UNBROKEN, SOLID VISUAL SCREEN WITHIN 18 MONTHS AFTER TIME OF PLANTING.

## PALMS

- MINIMUM CLEAR TRUNK 10'  
(3 PALMS = 1 TREE)

## GROUNDCOVERS

- 1 GAL. CONT. @ 12-18" O.C.
- TO PRESENT A FINISHED APPEARANCE AND REASONABLY COMPLETE COVERAGE WITHIN 4 MONTHS AFTER PLANTING

## SHRUBS

- MINIMUM OVERALL HT. 24" ABOVE GRADE IMMEDIATELY AFTER PLANTING

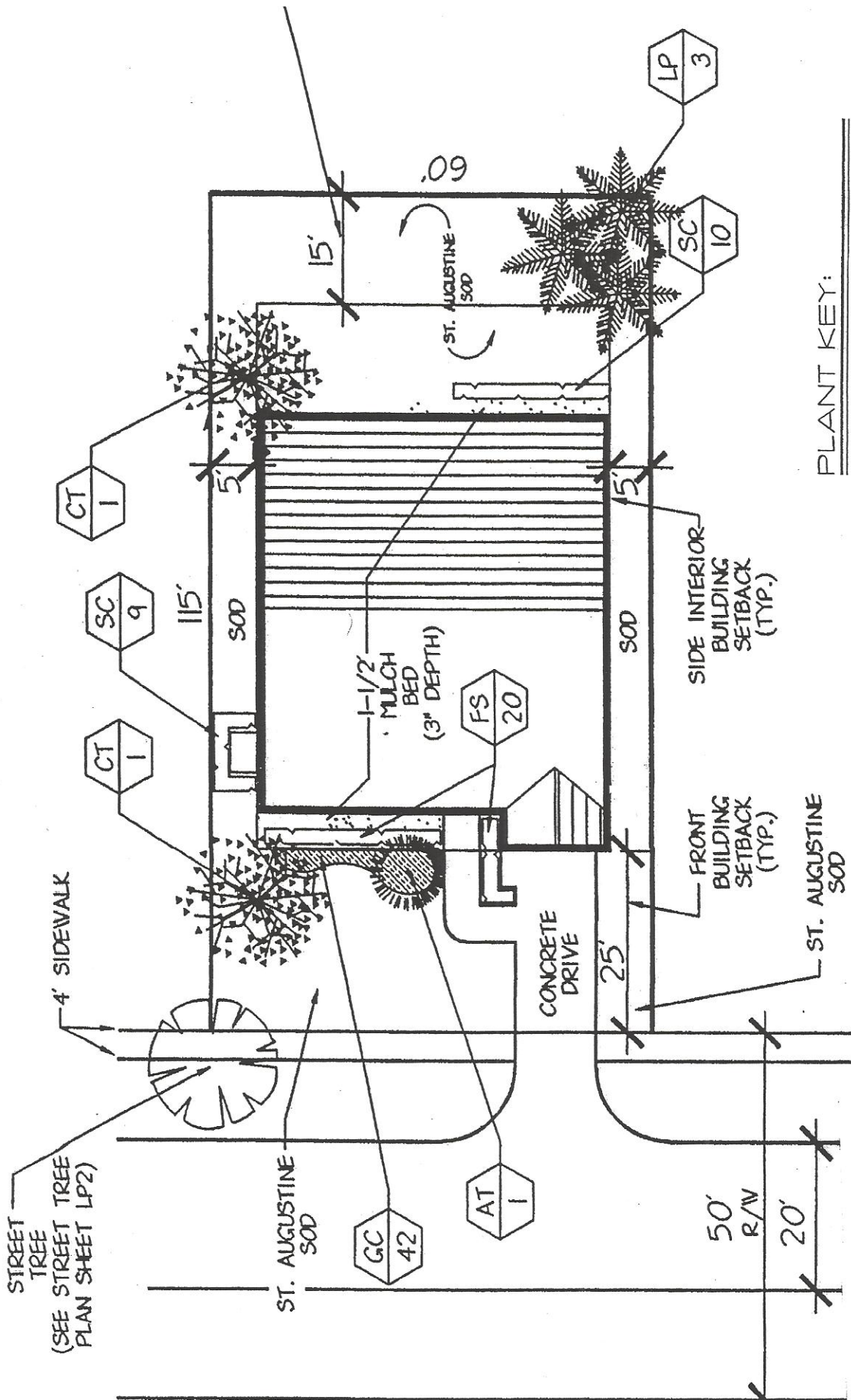
## VINES

- MINIMUM OVERALL HT. 12"

## NOTES:

1. 100% TREES ARE TO NATIVE SPECIES OR OTHER SPECIES LISTED IN SECTION 7.09.04(L)(2) OF THE ST. LUCIE CO. LAND DEVELOPMENT CODE.
2. 50% OF REQUIRED TREES SHALL BE SPECIES OTHER THAN PALM TREES.
3. 25% OF SHRUBS SHALL BE NATIVE SPECIES.

TREES REQUIRED (PER SEC.7.09.00)  
1 TREE PER 2500 S.F. OF LOT @ 6,900 S.F. = 3 TREES



**PLANT KEY:**

- ST - STREET TREES
- CT - CANOPY TREES
- AT - ACCENT TREES
- LP - LARGE PALMS
- AS - ACCENT SHRUBS/ PLANTS
- FS - FLOWERING SHRUBS
- NS - NON-FLOWERING SHRUBS
- SC - SCREENING SHRUBS
- GC - GROUND COVERS
- VI - VINES

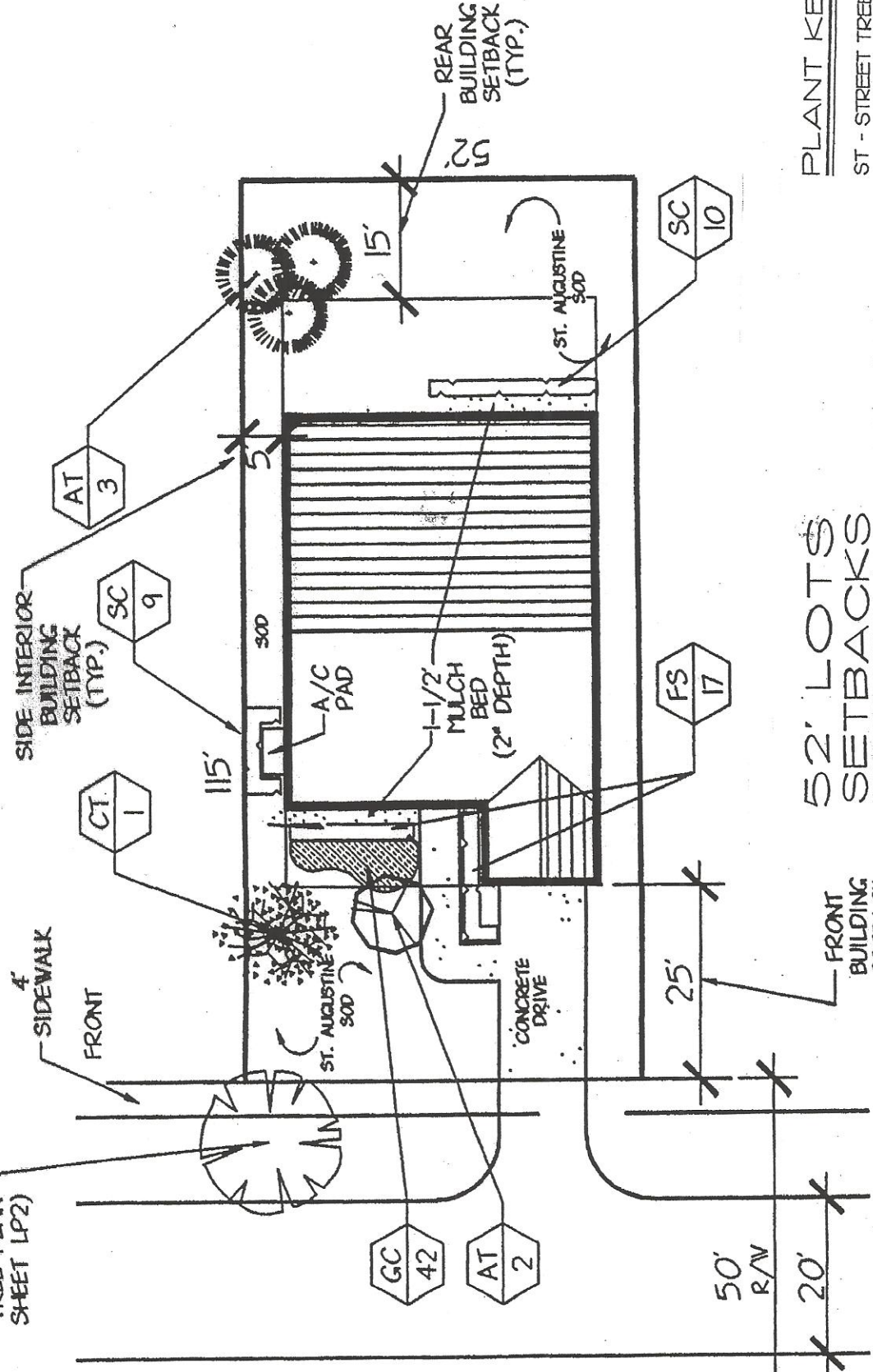
NOTE: REFER TO SHEET LP8 FOR DETAILED LISTS RESPECTIVE TO THIS PLANT KEY.

NOTES:  
UNIT CONFIGURATION IS FOR GRAPHIC PURPOSES ONLY.

TREES REQUIRED (PER SEC.7.09.00)  
1 TREE PER 2500 S.F. OF LOT @ 6,900 S.F. = 3 TREES



STREET TREE  
(SEE STREET TREE PLAN SHEET LP2)



PLANT KEY:

- ST - STREET TREES
- CT - CANOPY TREES
- AT - ACCENT TREES
- LP - LARGE PALMS
- AS - ACCENT SHRUBS/PLANTS
- FS - FLOWERING SHRUBS
- NS - NON-FLOWERING SHRUBS
- SC - SCREENING SHRUBS
- GC - GROUND COVERS
- VI - VINES

NOTE:  
REFER TO SHEET LP8 FOR DETAILED LISTS RESPECTIVE TO THIS PLANT KEY.

52' LOTS SETBACKS

- FRONT 25'
- SIDE INTERIOR SETBACK 6'
- REAR 15'

NOTES:  
UNIT CONFIGURATION IS FOR GRAPHIC PURPOSES ONLY.

TREES REQUIRED (PER SEC.7.09.00)  
1 TREE PER 2500 S.F. OF LOT @ 5,750 S.F. = 3 TREES